



Image Grille

Digital 3D Architectural Rendering

The Look is
High Tech or
Low Tech
it's Your Call.



Image Grille

Digital 3D Architectural Rendering

See your architectural vision come to life

in video on high-quality DVDs, published directly to the Web, as a rendering or illustration, 3d model, or animation to enhance your presentations. Time-saving, on-demand changes to existing designs gives you tremendous flexibility and the most cost-effective illustration services available.

Image Grille has added new workstations equipped with the latest illustration technology to meet growing demand for 3d architectural illustration and video, to give our clients even faster turnaround time, and more elements and features incorporated into your illustrations to produce a more sophisticated final design.

Image Grille's clients are architects, commercial and residential builders and developers, municipalities, realtors, and homeowners. Discover, as they have, the power of "seeing it to believe it" from stunning single-image renderings to dynamic multi-media presentations.

Illustrator and principal Ron Schatz has been recognized by peers and architects alike with Architecture In Perspective awards in 2008,



2006 and 2003 from the American Society of Architectural Illustrators.

In observing the techniques, media, and environments, as well as emotion, intent, and content of great buildings and great architects, he asks the question, "Does it work?"

It does, when the vision is clearly before you.

Let Image Grille bring YOUR great architecture to life.

Image Grille

164 Division St., Suite 711, Elgin, IL 60120
ph: (847) 214-8283 • fax: (866) 854-1429
email: sales@imagegrille.com

The Weekend House
Charles G Woods AIA, Architect



*AIP 23 award of Excellence

the **Commercial** Image catalog

Our commercial work is created to help the end user both envision the physical characteristics of the buildings, but also evoke the feel of the space.

Beyond the purely aesthetic, we also understand how fast-paced the business world moves. When you need a fast turnaround, call us ASAP -- we can often create a rendering in as little as eight hours, if necessary.

As an architect, designer or builder/developer, we know the ultimate satisfaction of your work comes from standing before the finished project. Before the project is finished, though, it must start. When it starts with an Image Grille rendering, your vision has already come to life.



From Concepts....



Image Grille

164 Division St. Suite 711, Elgin, IL 60120
www.imagegrille.com

(847) 214-8283

Linden Village Concept

3D Model-Artistic Rendered

Made From Hand Sketches

Architect: Rick Swanson, Lake Forest IL

Entourage Lobby

3D Model-Realistic Rendered

Made From Construction Documents

Exterior Architect: Swanson+Donahue, Lake Forest IL

Interior Architect: Knauer, Deerfield IL



The Touhy Centre

Skokie, Illinois

Nov 2007

2

The Touhy Centre

3D Model-Realistic Rendered
Made From Construction Documents

Developer: Reliance Lane Investors 1, Lincolnshire IL
Architect: Philip R. Cohen & Associates, Chicago IL



Image Grille

164 Division St. Suite 711, Elgin, IL 60120
www.imagegrille.com

(847) 214-8283





Image Grille

164 Division St. Suite 711, Elgin, IL 60120
www.imagegrille.com

(847) 214-8283

Illustrator Ron Schatz has been a lifelong observer of all types of commercial structures, from small office developments to sprawling malls to entire downtown areas of large and small cities alike. In doing so, he has developed an intrinsic sense of what draws people to these spaces, of what is important to them. Ron employs these observations to create an image, an illustration that artfully transports the viewer into the space.

Prairie Grove II
3D Model-Artistic Rendered

Made From Hand Sketches
Drawn on a plane in the morning, then reviewed 3 images later in the afternoon that day.





Image Grille

164 Division St. Suite 711, Elgin, IL 60120
www.imagegrille.com

(847) 214-8283

The Fountains/building #4

3D Model- Artistic B Rendered

Made From Construction Documents

Developer: Central Development

Architect: L.B. Herbst & Associates, Carol Stream IL



Ethanol Plant

3D Model- Artistic B Rendered

Made From Hand Sketch

Developer: L.E.E.D.S.

Architect: Rick Swanson, Lake Forest IL



Client: Visual Design Group-Inc., Hoffman Estates, IL



Plate 1



Image Grille

164 Division St. Suite 711, Elgin, IL 60120
www.imagegrille.com

(847) 214-8283



the Shops of Amberley

3D Model-Artistic Rendered

Made From Hand Sketches & Block 3d Models

Architect: Rick Swanson, Lake Forest IL



Image Grille

164 Division St. Suite 711, Elgin, IL 60120
www.imagegrille.com

(847) 214-8283



Prototype Service Stations & Carwash

3D Model-Realistic Rendered
Made From Construction Documents

Developer: Midwest Petroleum Development Company, Chicago IL
Architect: Sorce Architecture, Arlington Heights IL





Franklin Station/Phase #2
3D Model-Realistic Rendered
Made From Construction Documents

Developer: Di Paolo Company IL
Architect: Miniscalco Architects, StCharles IL

Opportunity House, Inc.

3D Model- Artistic B Rendered
Made From Construction Documents



Image Grille

164 Division St. Suite 711, Elgin, IL 60120
www.imagegrille.com

(847) 214-8283



the New York

3D Model- Artistic B Rendered
Made From Hand drawings studys
Architect: Charles G. Woods AIA, NCARB



Image Grille

164 Division St. Suite 711, Elgin, IL 60120
 www.imagegrille.com

(847) 214-8283



The Pinnacle

3D Model-Realistic & Artistic A Rendered
 Made From Construction Documents

Architect: Sorce Architecture, Arlington Heights IL



The Edinburgh Center

3D Model-Realistic & Artistic A Rendered
 Made From Construction Documents

Architect: Sorce Architecture, Arlington Heights IL



the Institution/Churches Image catalog



Architect: Don Erickson FALA



Architect: C.G.W.



Architect: -----



Kindred, Seattle Hospital

3D Model-Realistic Rendered

Made From Construction Documents

Developer: Kindred Healthcare Inc. WA

Architect: Belli & Belli Architects & Engineers, Wheeling IL

Townhall, WI

3D Model- Artistic B Rendered

Made From Hand Sketch

Architect: Rick Swanson, Lake Forest IL





SAR High School, Riverdale NY
Sport Field Deck
3D Model-Realistic Rendered
Made From Construction Documents

Developer: SAR Academy, Bronx NY
Architect: Liederbach & Graham Architects, Chicago IL



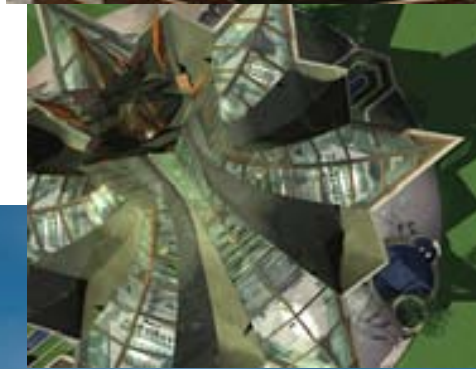


Architect: Walter C. Carlson

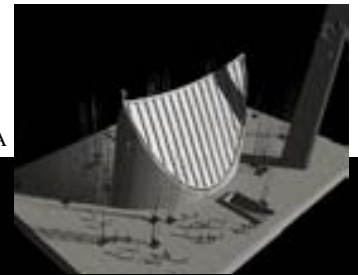




Architect: Don Erickson FALA



Architect: Charles G Woods AIA



Architect: DBH & Asso.



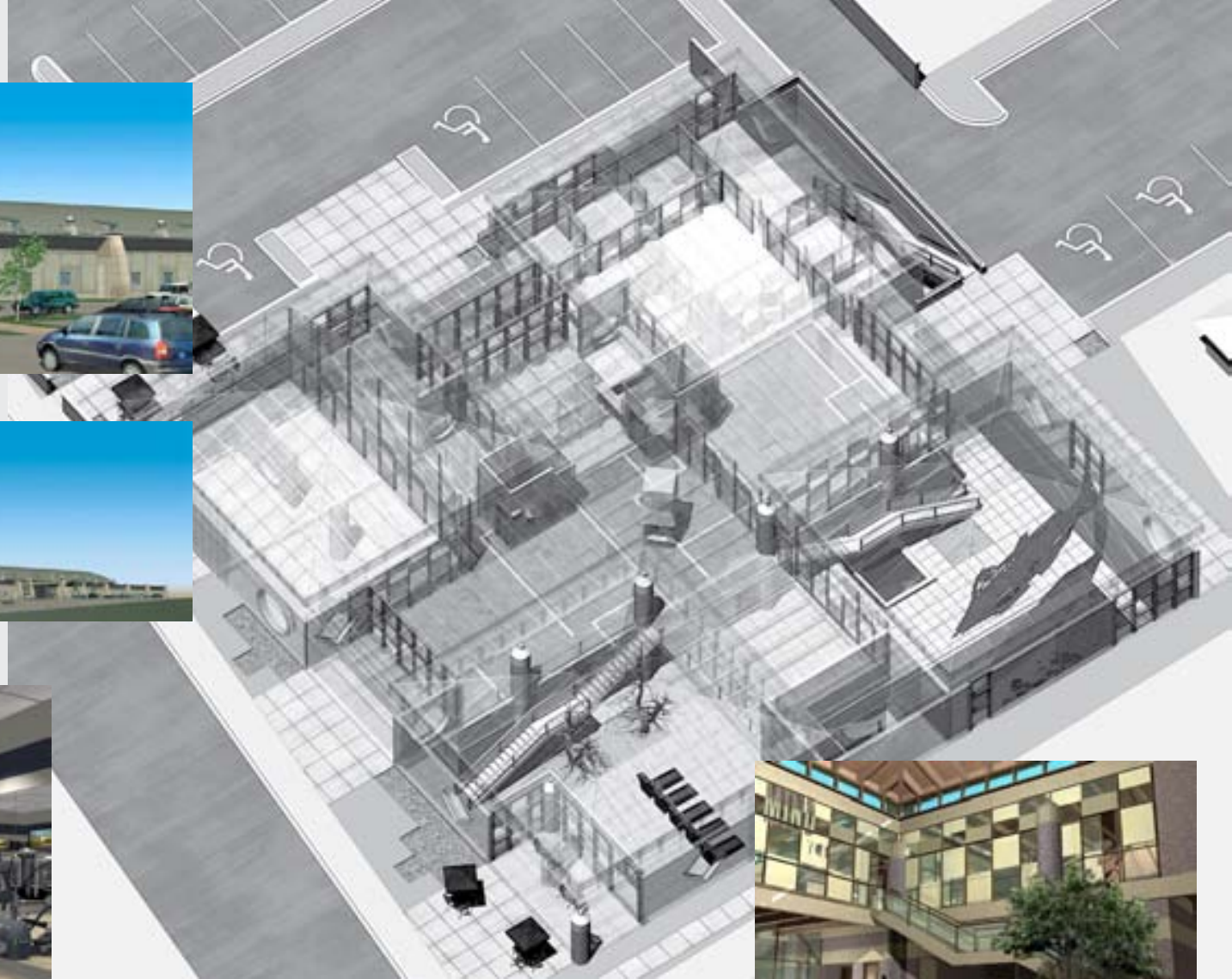
Image Grille

164 Division St. Suite 711, Elgin, IL 60120
www.imagegrille.com

(847) 214-8283



Architect: Rick Swanson AIA



Architect:-----



Architect: Charles G Woods AIA



Image Grille

164 Division St. Suite 711, Elgin, IL 60120
www.imagegrille.com

(847) 214-8283



Architect: Heard & Assoc.



Architect: Rick Swanson AIA

Architect:-----



Image Grille

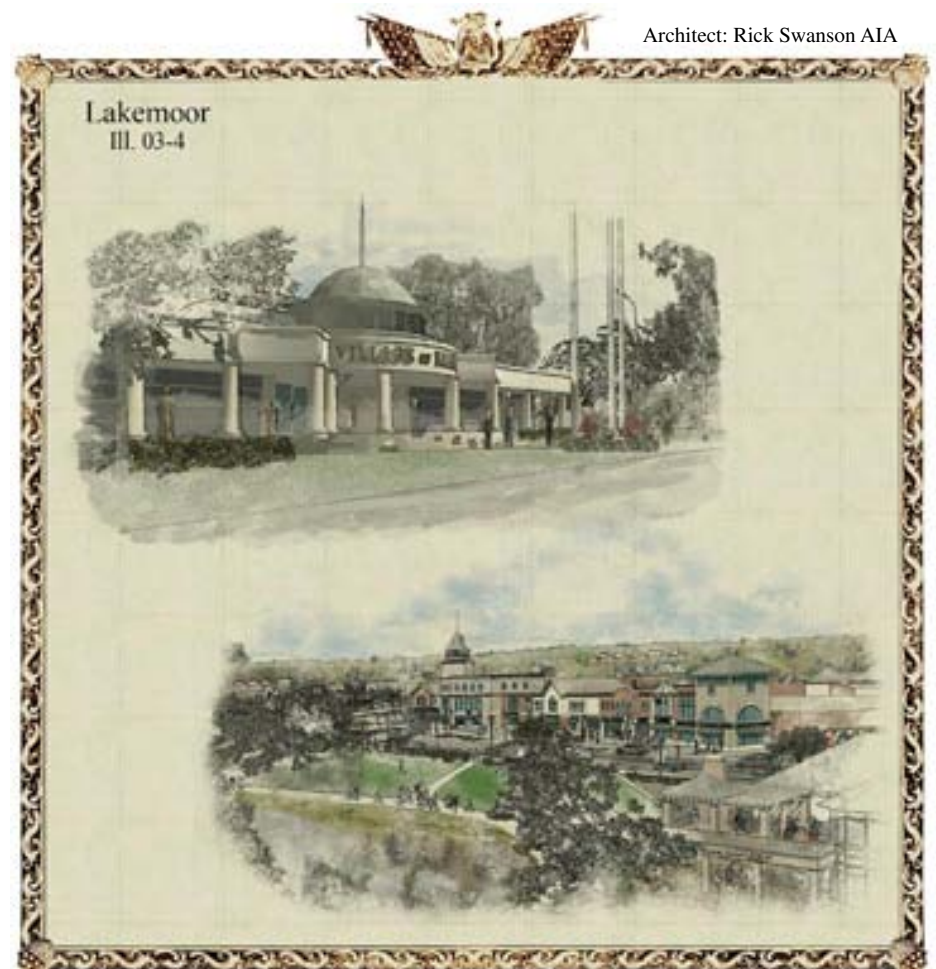
164 Division St. Suite 711, Elgin, IL 60120
www.imagegrille.com

(847) 214-8283



Architect: Soos & Assoc.

15



Architect: Rick Swanson AIA

the **Residential**
Image catalog



*AIP 23 award of Excellence

The Weekend House
Charles G Woods AIA, Architect



Image Grille

164 Division St. Suite 711, Elgin, IL 60120
www.imagegrille.com

(847) 214-8283

The 2D elevations

1st is a photo
2nd is artistic



The 3D models

1st is a photo
2nd is artistic
3rd is a water color style



The Kelly Residents

2d or 3d

Made From Construction Documents
Architect: Swanson+Donahue, Lake Forest IL



Image Grille

164 Division St. Suite 711, Elgin, IL 60120
www.imagegrille.com

(847) 214-8283

17

Color Study



Last

First Page

Next



Horseshoebay Wi.

3d Watercolor

Made From Construction Documents

Architect: Rick Swanson, Lake Forest IL



The Beroti Residents

3d artistic

Made From Cad Documents

Architect: Swanson+Donahue, Lake Forest IL



Image Grille

164 Division St. Suite 711, Elgin, IL 60120
www.imagegrille.com

(847) 214-8283



Architect: Don Erickson FALA

Architect: Dennis Blair, AIA



Architect: Arif McAlpine, AIA



Architect: Rick Swanson, Lake Forest IL





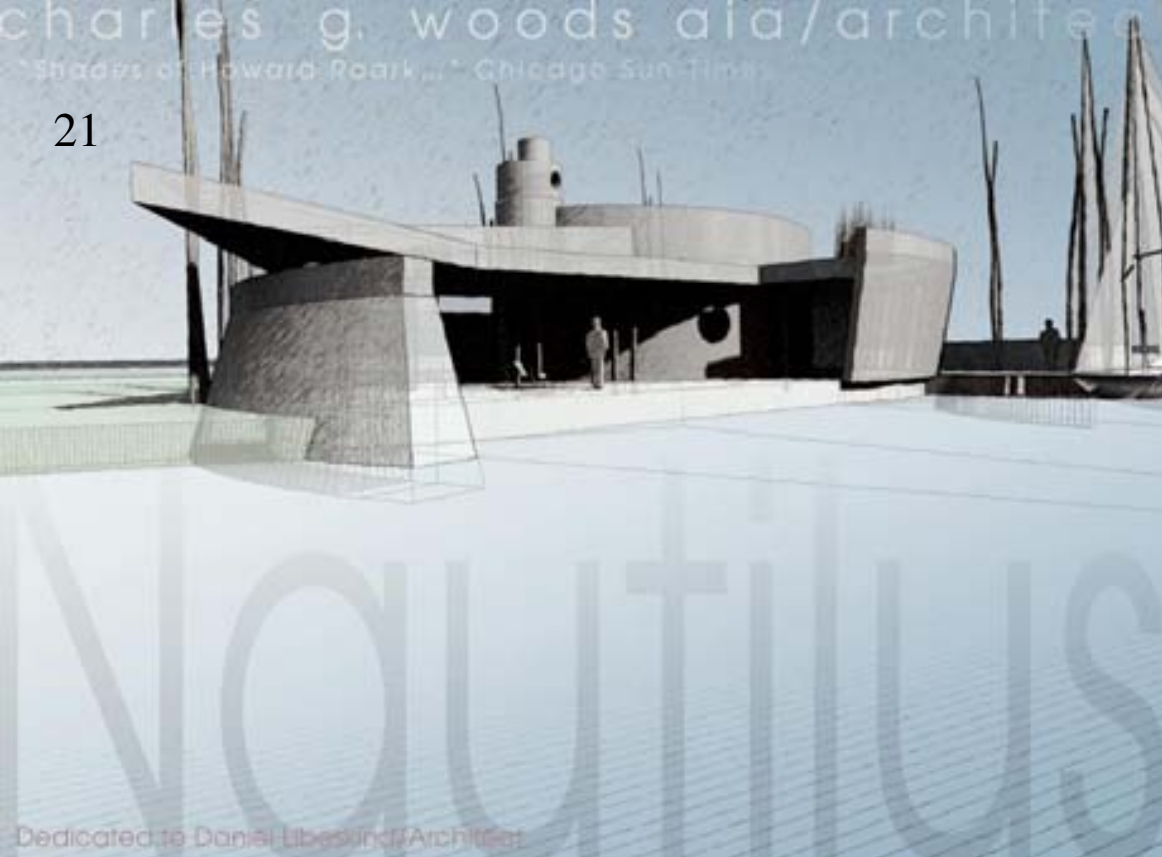
Image Grille

164 Division St. Suite 711, Elgin, IL 60120
www.imagegrille.com

(847) 214-8283




The Ap./Davis House
Charles G Woods AIA, Architect





Dedicated to Daniel Libeskind/Architect






THE
CLOCK TOWER POINTE
 OF HARWOOD HEIGHTS




 DEVELOPMENT CORPORATION

